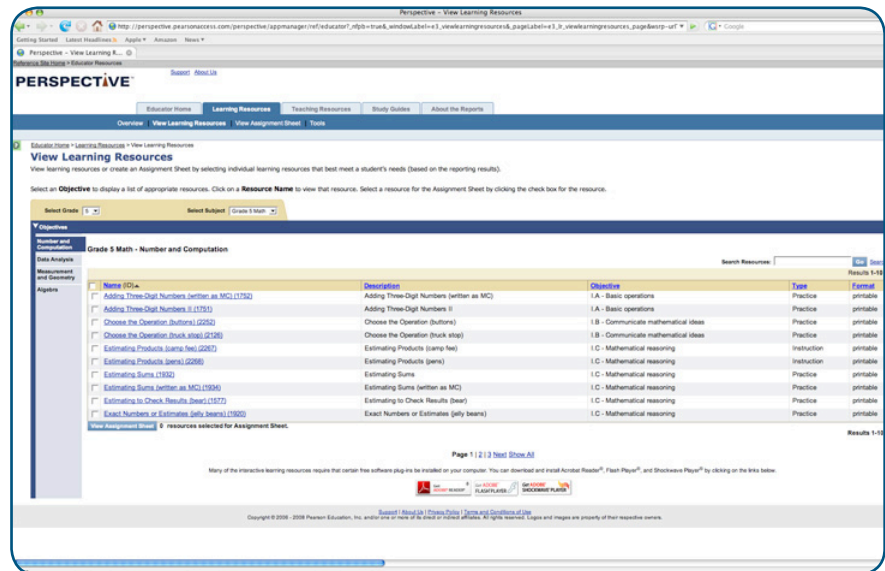


Perspective™ allows educators to create **Assignment Sheets** for their students and classes. The goal of the assignment sheet is to provide students with additional remediation or enrichment opportunities. Educators create the assignment sheet by selecting resources in the resource library and adding the information to the sheet. The educator distributes the assignment sheet to the student or class.

➤ *Personalized supplemental instruction for students, easily distributed and monitored*

### Teachers select content

Because teachers have first-hand knowledge of the work habits of their students, both in classes and on tests, they are best suited to determine what each child needs in order to succeed academically. Assignment sheets may be created for each individual student, several students, an entire group or classroom. Perspective allows educators to match content used in the classroom to those students or groups of students who need extra work, practice, or specialized attention.

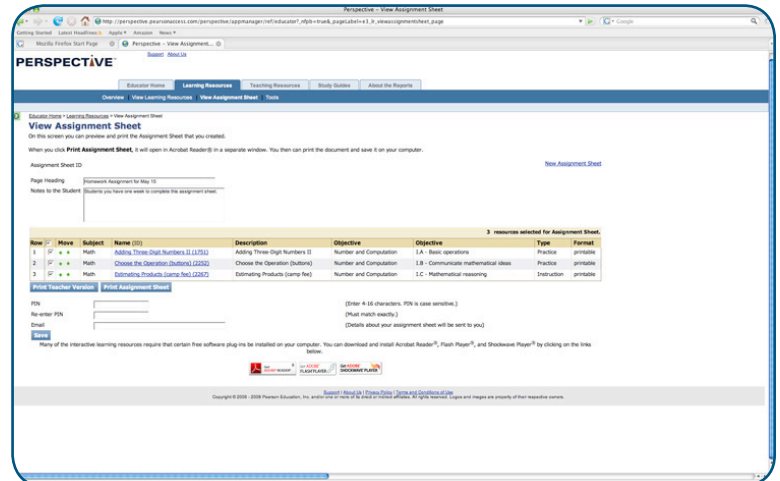


*Perspective's Assignment Sheet feature allows educators to select content and customize assignments.*

➤ **Visit** [PearsonPerspective.com](http://PearsonPerspective.com) or call 800-627-0365

## Customized instructions on each assignment sheet

Assignment sheets may contain specialized instructions for students as well as their parents and families. Depending upon the assignment, instructions may apply to each individual student, or an entire group of students. Instructions may include comments on use of tools or ancillary materials, modified due dates and order of completion, or even messages directed to the student. When educators save the assignment sheet, an assignment sheet ID is created. Educators can inform families of their students educational needs by sharing printed copies of the assignment sheet or emailing the assignment sheet code. Students can then take that number to the Perspective For Families site to begin work.



*Educators can create assignment sheets, print, and save for future use.*

## Less overwhelming to students

Perspective's assignment sheets break up targeted content into manageable, sequential sections so that students can complete their work without being overwhelmed. Students are able to learn at their own pace, and obtain a sense of accomplishment as they work through the assignment sheet. Once a task is completed from the assignment sheet, a student can check the completed box next to the task on the assignment sheet. Assignment sheets can help students track completion of each assignment, allowing teachers to monitor student or group progress.

## Easier to track assignments

Assignment sheets can be printed and shared, allowing teachers and families to track their students' assignments and progress. Students can also see their progress as they work through the assignments further reinforcing a sense of personal accomplishment.

**ASSIGNMENT SHEET**

**Learning Resources**  
 Homework Assignment for May 15

Assignment Sheet ID AS4748

- If you are viewing the Assignment Sheet on the computer, click directly on the **Resource ID number** below to open the resource and start the learning activity.
- If you have a paper copy of the Assignment Sheet, follow the instructions below to start the learning activity.
  1. Open your computer's browser and go to <http://perspective.pearsonaccess.com/REF/>
  2. Click on "Go to Parent's Resources" button, then click the **Learning Resources** tab.
  3. In the **Show a Resource** box, enter a **Resource ID** shown in the list below. Press the **Go** button to open the resource in another window.
  4. When you are finished with an activity, close the window and put a check in the **Completed** box.

Students,  
You have one week to complete this assignment sheet. Once completed please turn in your complete sheets into the homework basket on my desk.  
Please complete this assignment sheet by

Done?	Row	Subject	Name (ID)	Description	Type	Format
<input type="checkbox"/>	1	Math	<a href="#">Adding Three-Digit Numbers II(1751)</a>	Adding Three-Digit Numbers II	Practice	printable
<input type="checkbox"/>	2	Math	<a href="#">Choose the Operation (truck stop)(2126)</a>	Choose the Operation (truck stop)	Practice	printable
<input type="checkbox"/>	3	Math	<a href="#">Estimating Products (pens)(2268)</a>	Estimating Products (pens)	Instruction	printable

*Students can complete assignments online, track completed tasks, and return assignment sheets to their teacher.*